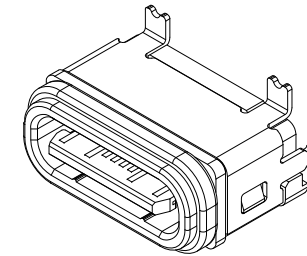
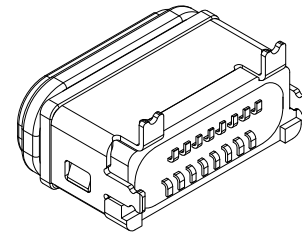
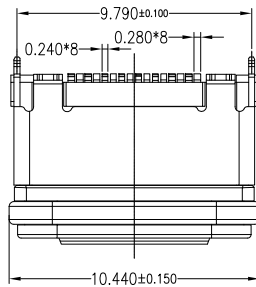
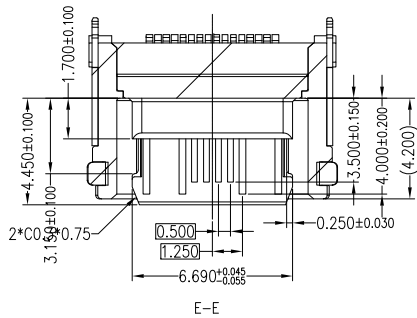


6	7	8
ITEM	MODIFICATION	DATE
☑	新版发行	2021-12-15
		望盛
		袁俊林



Note:

1.Material:

1.1 Housing: PA9T,UL94-V0,COLOR:BLACK

Out shell:PA46 UL94-V0,COLOR:BLACK

1.2 Contact:copper alloy,t=0.12mm

1.3 Shell: SUS,T=0.25mm

1.4 Middle plate: SUS t=0.15mm.

1.5 Running ring: Silica Gel.COLOR:RED

2.ELECTRICAL:

2-1:CURRENT RATING:

VBUS AND GND CONTACTS RATED AT 3A Max

VBUS AND GND CONTACTS RATED AT 0.5A Min

0.9Amps Max.for all other contact.

PARALLELED FOR A TOTAL OF 5A;

2-2:INITIAL CONTACT RESISTANCE:40 MILLIOHMS

2-3:DIELECTRIC WITHSTANDING VOLTAGE:100V AC MIN;

3:MECHANICAL CHARACTERISTICS:

3-1:MATING FORCE:5~20N

3-2:UNMATING FORCE:8~20N(INITIAL),

6~20N(AFTER 10000 CYCLES)

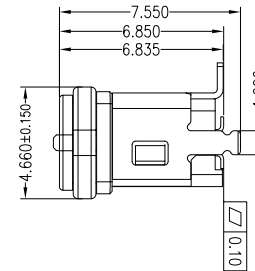
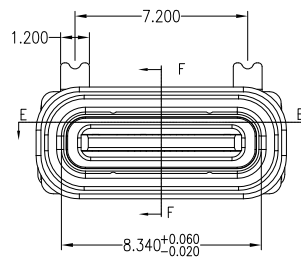
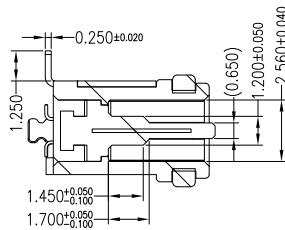
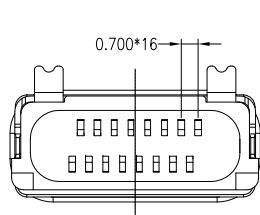
3-3:FREQUENCE: 500±50 CYCLES/HOUR,10000 CYCLES

3-4:OPERATING TEMPERATURE;-40°~80°.

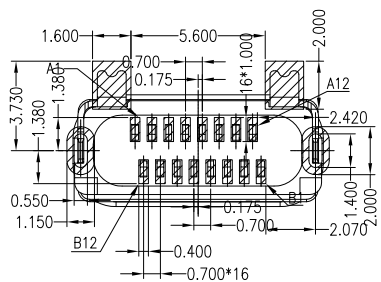
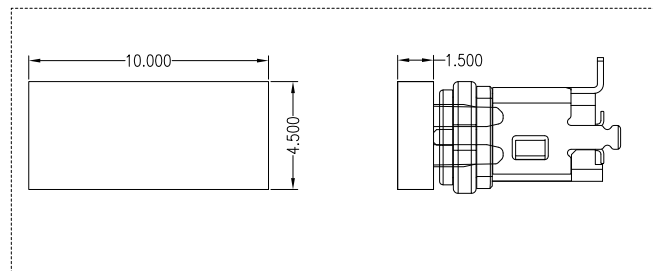
3-5: Salt fog Test: 48 Hours.

4: WATERPROOF: IP-X8.

CX012



Cap dimensions



RECOMMENDED P.C.B. LAYOUT
TOLERANCE UNSPECIFIED ±0.05mm PCB T=1.0MM
PCB LAYOUT 图仅供参考

TABLE B
Type c Pin Assignments

5	OUT SHELL	PA46 Black	A1	GND	B12	GND
4	HOUSING	PA9T Black	A4	VBUS	B9	VBUS
3	RING	RED Silica Gel	A5	CC1	B8	SBU2
2	Shell	SUS Ni50U*	A6	DP1	B7	DN2
1	Contact	C7025 AuNi3+IU**	A7	DN1	B6	DP2
			A8	SBU1	B5	CC2
			A9	VBUS	B4	VBUS
			A12	GND	B1	GND
ITEM	DEFINITION	SPEC DESCRIPTION	PIN	SIGNAL NAME	PIN	SIGNAL NAME

TOLERANCE UNLESS
OTHERWISE
SPECIFIED

.X±0.15	Ang.±1°
.XX±0.10	
.XXX±0.05	

PROJ.				
DIMENSION STYLE	MM ONLY			
DESIGN UNITY	METRIC			
SCALE	1:1			
东莞市超讯电子有限公司 transcend communication		DRAWN BY 望盛 DATE 2021-12-15 CHECKED BY 望盛 DATE 2021-12-15 APPROVED BY 袁俊林 DATE 2021-12-15		
TITLE TYPE C 16PIN 直立式防水母座		PART NO. BNF50T290R-W		SHEET NO. 1 OF 1
MOLD NO. DWG-BOX FH-073		C		REV. A0